

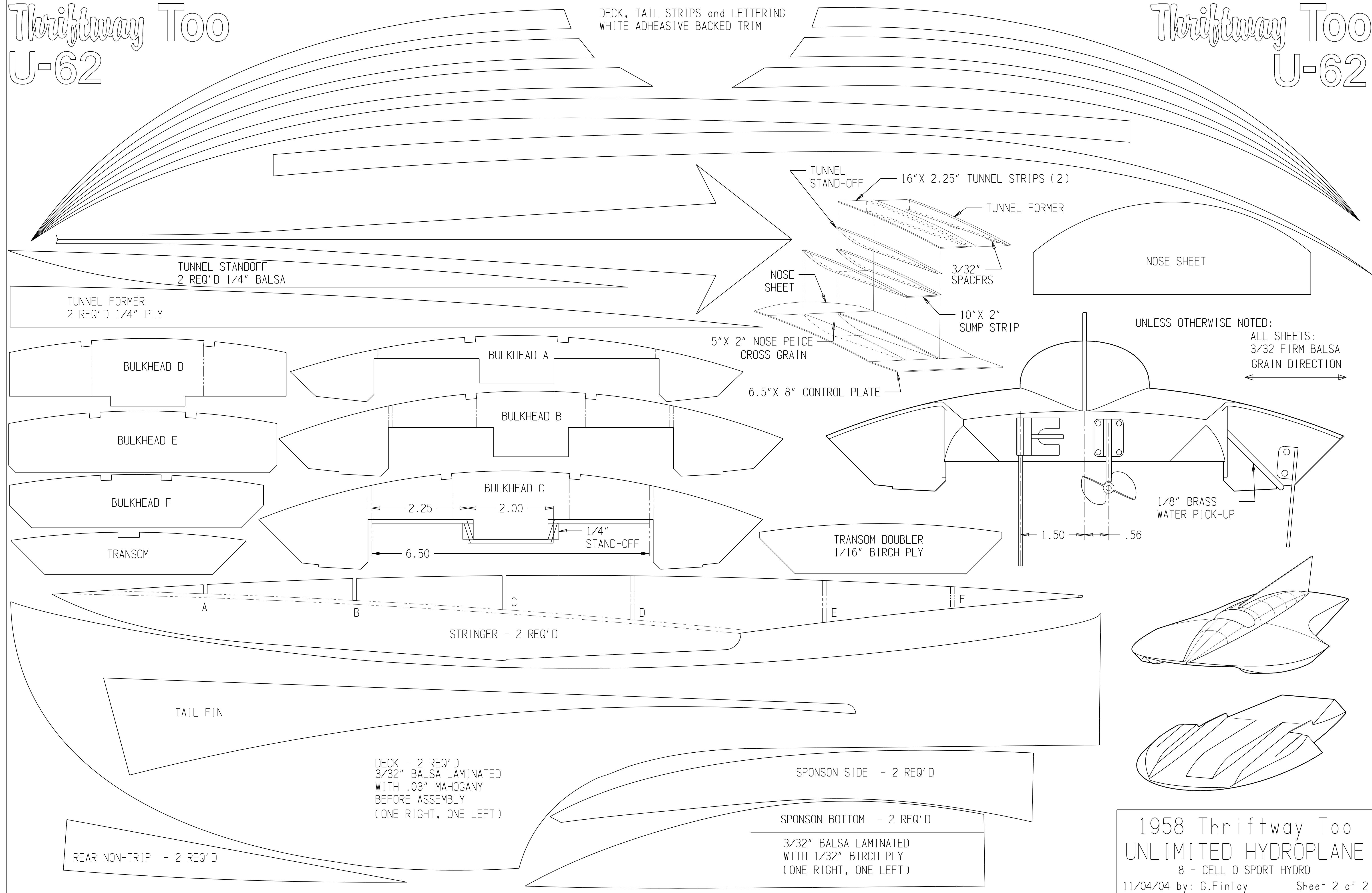
Thriftway Too

U-62

DECK, TAIL STRIPS and LETTERING
WHITE ADHESIVE BACKED TRIM

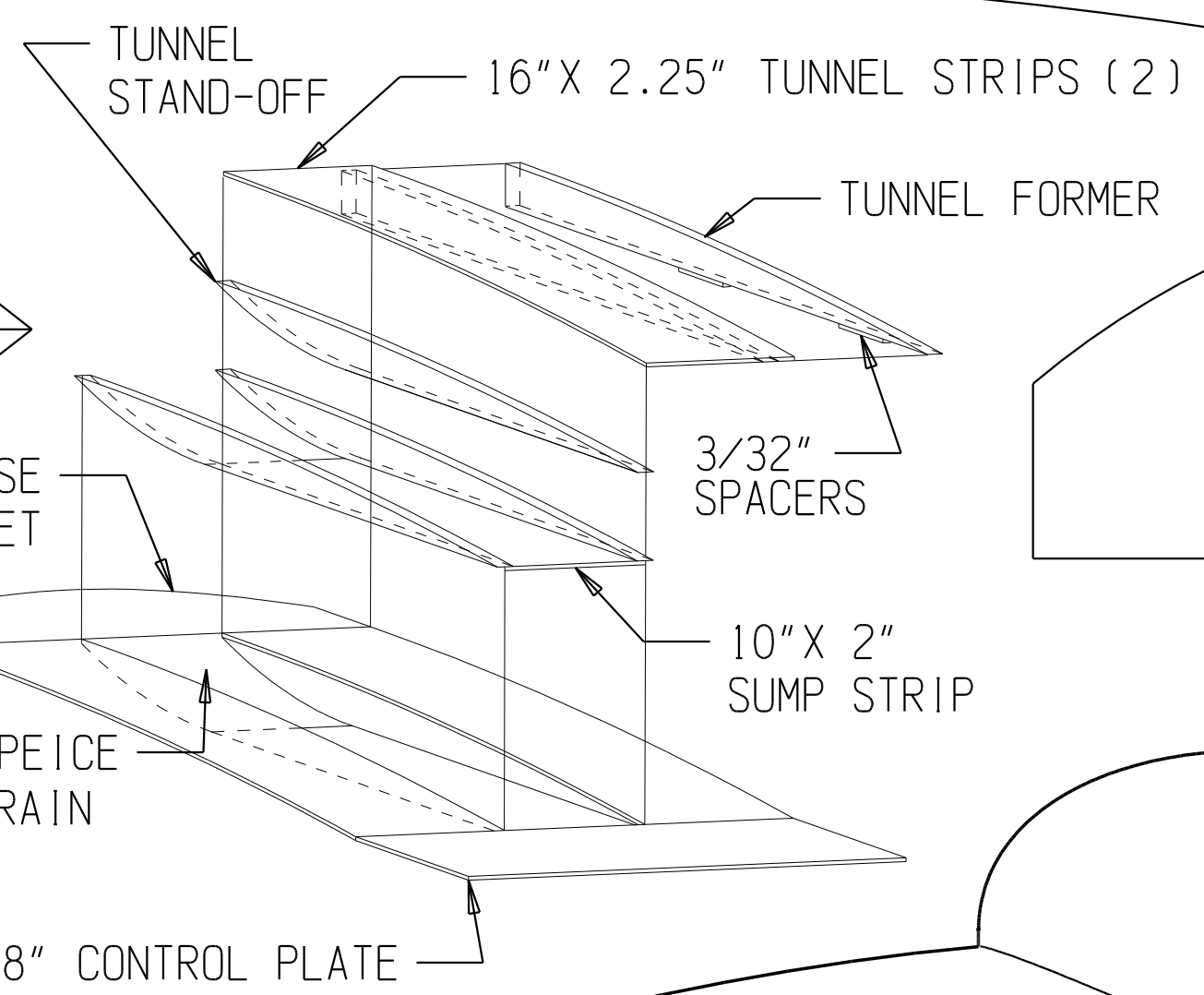
Thriftway Too

U-62



TUNNEL STANDOFF
2 REQ'D 1/4" Balsa

TUNNEL FORMER
2 REQ'D 1/4" PLY



NOSE SHEET

UNLESS OTHERWISE NOTED:
ALL SHEETS:
3/32 FIRM Balsa
GRAIN DIRECTION

BULKHEAD D

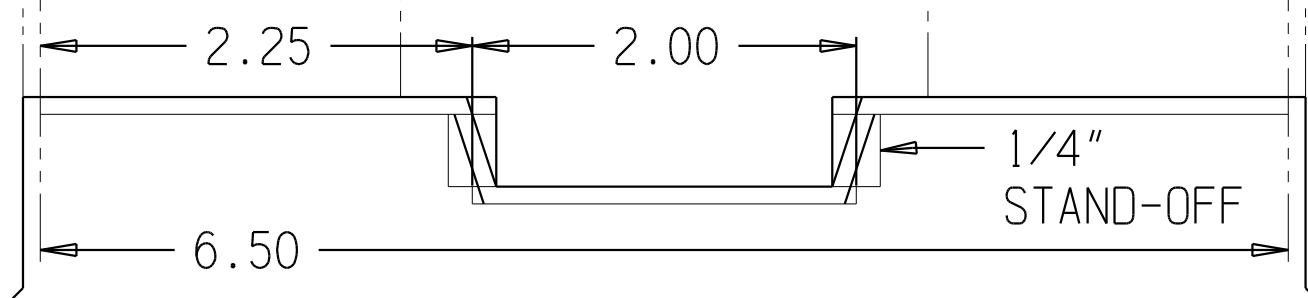
BULKHEAD A

BULKHEAD E

BULKHEAD B

BULKHEAD F

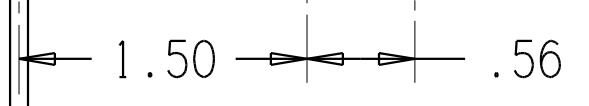
BULKHEAD C



TRANSOM

TRANSOM DOUBLER
1/16" BIRCH PLY

1/8" BRASS
WATER PICK-UP



A

B

C

D

E

F

STRINGER - 2 REQ'D

TAIL FIN

DECK - 2 REQ'D
3/32" Balsa LAMINATED
WITH .03" MAHOGANY
BEFORE ASSEMBLY
(ONE RIGHT, ONE LEFT)

SPONSON SIDE - 2 REQ'D

SPONSON BOTTOM - 2 REQ'D

3/32" Balsa LAMINATED
WITH 1/32" BIRCH PLY
(ONE RIGHT, ONE LEFT)

REAR NON-TRIP - 2 REQ'D